



# Snow Gate™

Estate  
agency  
done  
properly



## 49 Council Terrace

Honley, Holmfirth, HD9 6JX

A superb newly modernised three bedroom family home in the heart of Honley a short walk from the amenities, train station and high school. Brand new gas central heating, newly wired throughout, new and contemporary bathroom and kitchen with appliances, new flooring and decoration and no vendor chain. Briefly comprises entrance lobby, lounge, dining kitchen, three large first floor bedrooms and family bathroom. Plenty of off road parking to the front and large, level lawned garden to the rear.  
**NO VENDOR CHAIN.**

£230,000

# 49 Council Terrace

Honley, Holmfirth, HD9 6JX



- NEWLY MODERNISED THREE LARGE BEDROOM FAMILY HOME
- IMMACULATE THROUGHOUT WITH QUALITY FIXTURES AND FITTINGS
- SPACIOUS LOUNGE AND DINING KITCHEN
- OFF ROAD PARKING TO THE FRONT AND ENCLOSED GARDEN TO THE REAR
- BRAND NEW GAS CENTRAL HEATING AND WIRING THROUGHOUT
- NO VENDOR CHAIN

Entrance

Parking and Garden

Lounge  
14'8" x 13'8" (4.47m x 4.17m)

Dining Kitchen  
18'1" x 9'8" (5.51m x 2.95m)

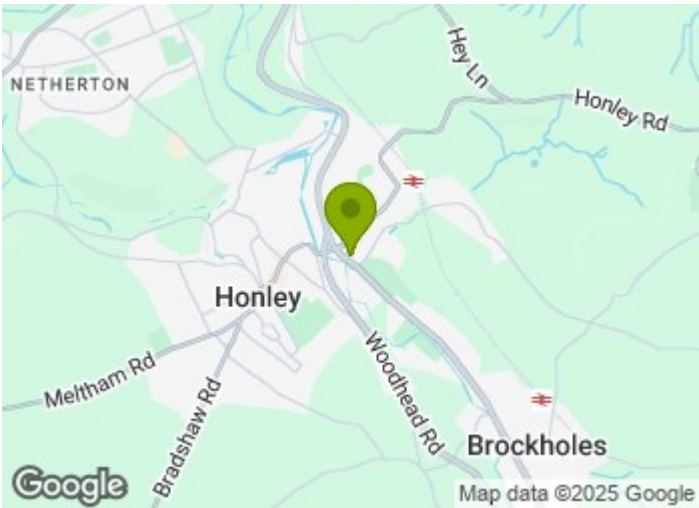
First Floor Landing

Front Bedroom  
13'8" x 11'10" (4.17m x 3.61m)

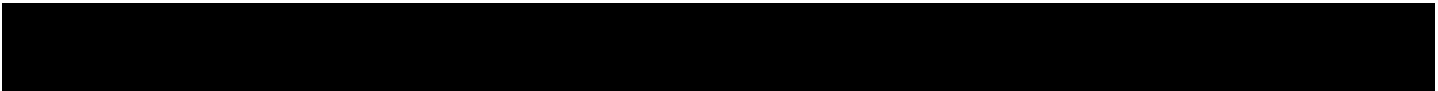
Rear Bedroom  
12'6" x 9'9" (3.81m x 2.97m)

Bedroom 3  
10'11" x 10'5" max (3.33m x 3.18m max)

Bathroom  
6'7" x 5'5" (2.01m x 1.65m)



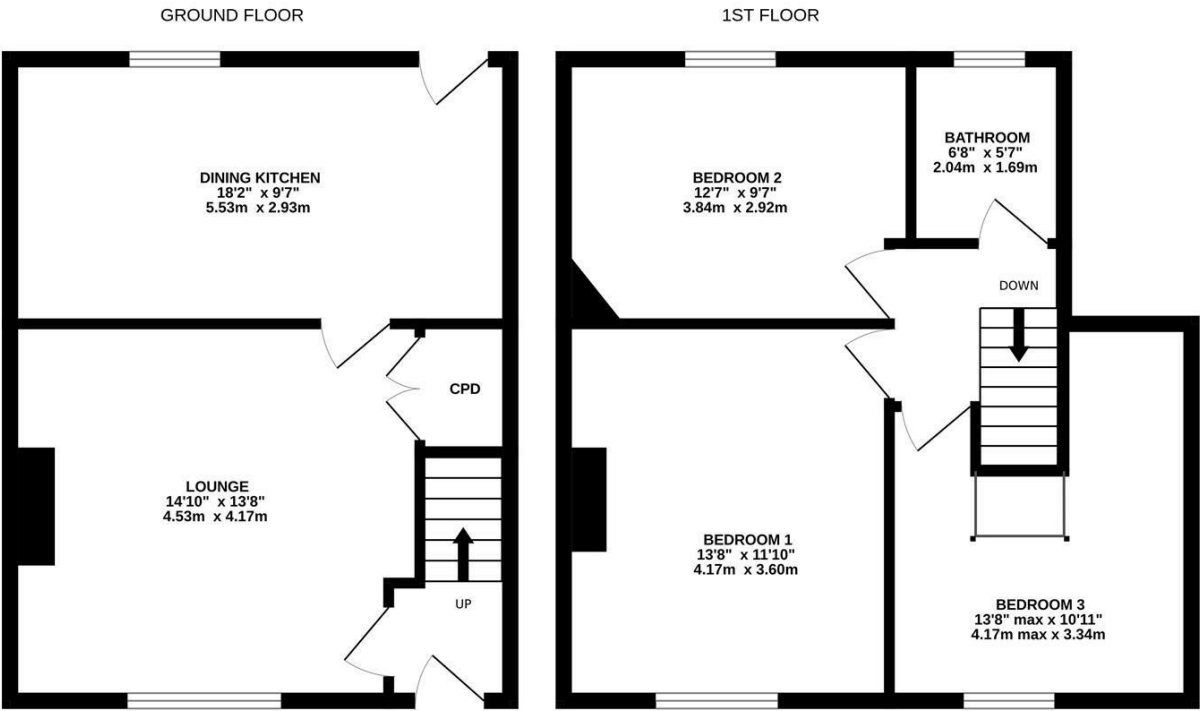
Directions







Floor Plan



Whilst every attempt has been made to ensure the accuracy of the floorplan contained here, measurements of doors, windows, rooms and any other items are approximate and no responsibility is taken for any error, omission or mis-statement. This plan is for illustrative purposes only and should be used as such by any prospective purchaser. The services, systems and appliances shown have not been tested and no guarantee as to their operability or efficiency can be given.  
Made with Metropix ©2025

These particulars, whilst believed to be accurate are set out as a general outline only for guidance and do not constitute any part of an offer or contract. Intending purchasers should not rely on them as statements of representation of fact, but must satisfy themselves by inspection or otherwise as to their accuracy. No person in this firms employment has the authority to make or give any representation or warranty in respect of the property.

